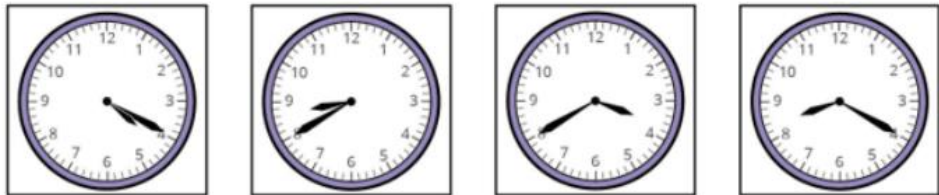


Last term

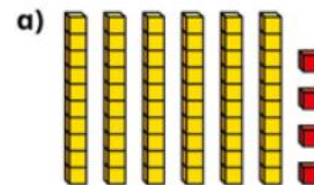
1 Match the clocks to the times.



- 20 minutes
to 9
- 20 minutes
past 4
- 20 minutes
to 4
- 20 minutes
past 8

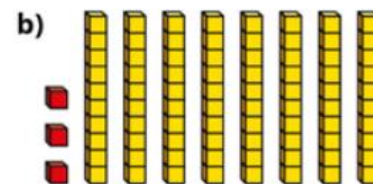
Previous learning

1 Complete the sentences.



$$64 = \square \text{ tens} + \square \text{ ones}$$

$$64 = \square + \square$$



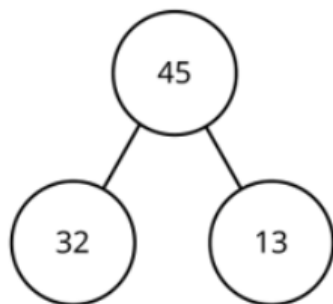
$$83 = \square \text{ tens} + \square \text{ ones}$$

$$83 = \square + \square$$

We are currently learning

1 Complete the fact family for each model.

a)



$$\square + \square = \square$$

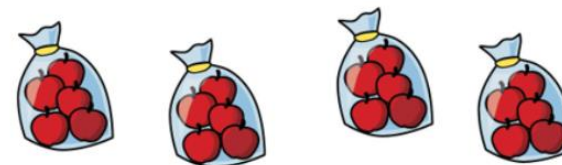
$$\square + \square = \square$$

$$\square - \square = \square$$

$$\square - \square = \square$$

We are learning next

1 b)



There are bags.

Each bag has apples.

There are equal groups of