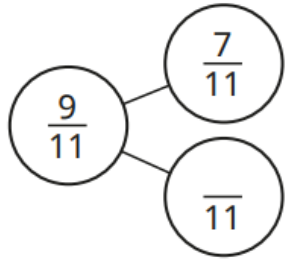
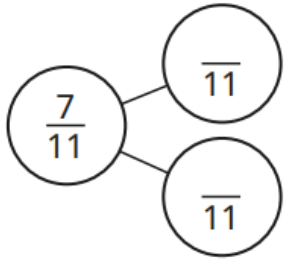


Last Term



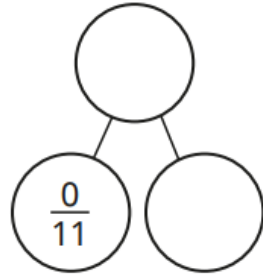
$$\frac{9}{11} - \frac{7}{11} = \frac{\square}{11}$$

$$\frac{9}{11} - \frac{\square}{11} = \frac{7}{11}$$



$$\frac{7}{11} - \frac{\square}{11} = \frac{\square}{11}$$

$$\frac{7}{11} - \frac{\square}{11} = \frac{\square}{11}$$



$$\frac{\square}{11} - \frac{0}{11} = \frac{\square}{11}$$

$$\frac{\square}{11} - \frac{\square}{11} = \frac{0}{11}$$

Previous learning

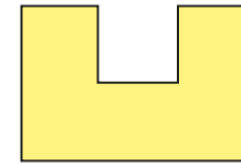
Create a right-angle checker like this one.



Use your right-angle checker to find right angles in your classroom or school.

Draw at least three right angles that you have seen.

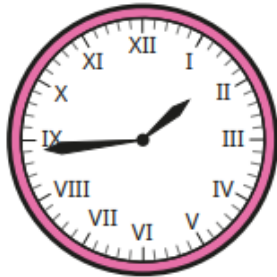
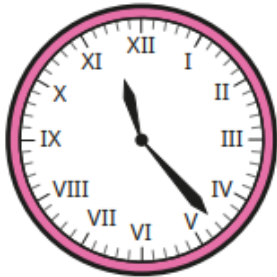
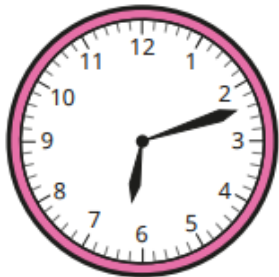
There are six right angles inside this shape.



Use the symbol for a right angle to show them on the shape.

Current learning

Write the times shown on each clock.



We are learning next

Complete the sentences.

There are _____ days in a week.

There are _____ months in a year.

There are _____ days in a non-leap year.

There are _____ days in a leap year.

Leap years happen every _____ years.

Use a calendar to help you answer the question.

How many days are in each month in a normal calendar year?

January	May	September
February	June	October
March	July	November
April	August	December