

Year 3 – Spring Term

'Going Global'

Knowledge Organiser



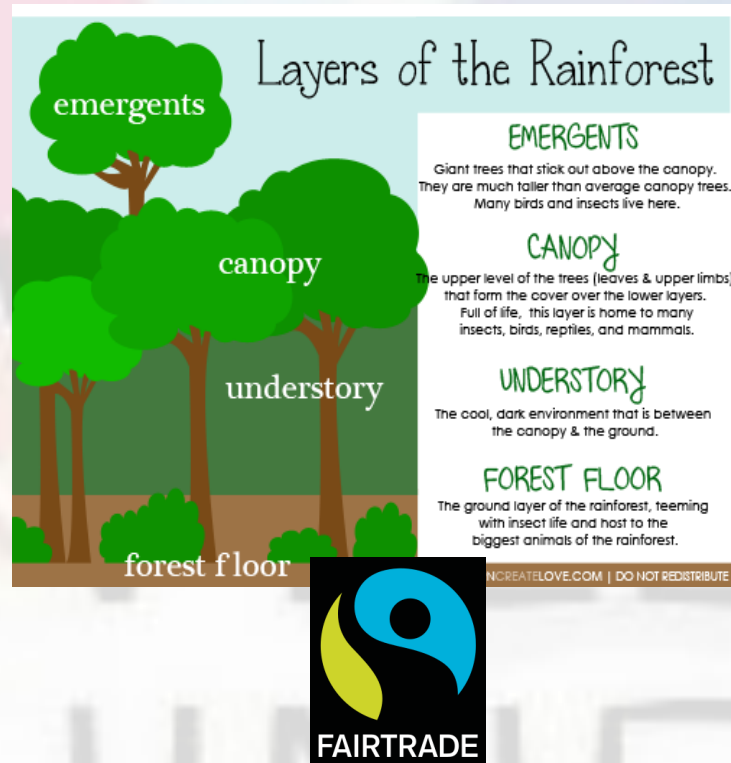
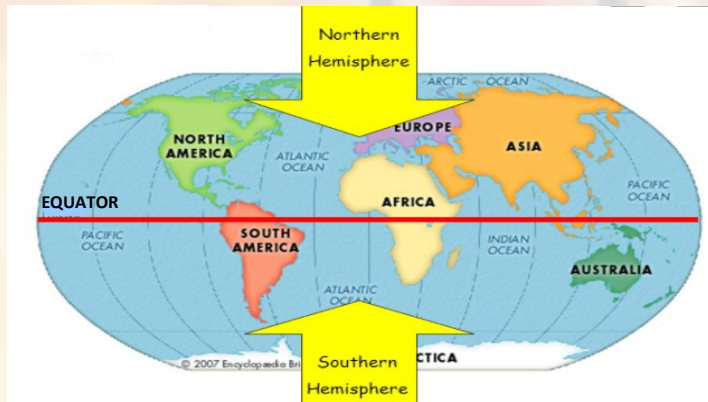
Geography Knowledge

Mapping

The equator is an imaginary circle around Earth. It divides Earth into two equal parts: the Northern Hemisphere and the Southern Hemisphere. It runs east and west halfway between the North and South poles. The Arctic circle is located around the North Pole and the Antarctic circle is located around the South Pole.

The UK is located in Europe— this is a continent in the Northern Hemisphere. South America is one of the world's 7 continents and is located mostly in the Southern Hemisphere.

Atlases and Computer Mapping are 2 ways we can locate countries around the world. England, Scotland, Wales, Northern Ireland and Republic of Ireland are some of the countries found in Europe. Brazil, Peru and Chile are some of the countries located in South America.



Vocabulary

Equator— an imaginary circle around Earth. It divides Earth into two equal parts: the Northern Hemisphere and the Southern Hemisphere.

Northern Hemisphere— The northern part of Earth

Southern Hemisphere— The southern part of Earth

Arctic Circle— The northern polar circle

Antarctic Circle— The southern polar circle

Rainforest— A dense forest with heavy rainfall

South America— One of the world's continents

Brazil, Peru, Chile— South American countries

Climate Zones— Area of the world with different climates

Deforestation— The cutting, clearing and removing of rainforests

Natural Resource— Food— Something found in nature— not man-made

Fair Trade— People receiving a fair price for the goods they produce

Rainforests

Physical Geography

—Rainforests are regions around the world which have lots of trees, plants and animals. There are two main types of rainforests – Tropical and Temperate. The Amazon is a tropical rainforest located in South America. Crinan Woods is a temperate rainforest located in Scotland.

—Tropical rainforests are hot, humid and very rainy. They are found near the Equator. They contain tropical plants and animals.

—Temperate rainforests are also very rainy. However, they are located further away from the equator. This means that the climate is not the same as tropical rainforests. It still rains a lot but the temperature is mild— not too hot and not too cold! This means the plants and animals are different to those in tropical rainforests.

—Rainforests are an important region in the world because they produce a large amount of oxygen which helps humans and animals breathe and survive. They also help to reduce climate change by absorbing carbon dioxide.

Human Geography

Fair Trade:

—Many things we have in our homes come from tropical and rainforests including: chocolate, sugar, rubber, bamboo and many medicines.

—Fair Trade is important in rainforest regions as well as other places around the world. It is about better prices, decent working conditions and fair terms of trade for farmers and workers in the developing world.

Deforestation:

—Deforestation is the cutting down of forests by humans. This is done for lots of reasons including: farming, using wood for different purposes, mining and building roads and houses. Each of these reasons generate money for different countries.

—Deforestation is not good for the environment because it can cause animal extinction, soil erosion, climate change.



History Knowledge

The Mayan Civilisation c. AD 900

The Mayans were an ancient Stone Age civilisation who lived in Mexico, in Central America, just north of South America. They often lived in rainforests.

The Mayans are considered to be one of the more advanced Stone Age civilisations because they used the rainforest effectively.

Mayans everyday lives were busy, either with jobs, trading, farming to produce crops and goods, ceremonies, games, dancing, writing.

They were very good at building big cities within rainforest regions. They used the natural rocks that were found in the area for construction as well as to create weapons and tools (bow and arrows, spears) The Maya built pyramids, temples, palaces, walls, houses and more. They often decorated their buildings with intricate stone carvings, statues, and paint.

Mayan houses walls made of stone or mud. These huts were covered with hay providing protection from weather.

They were very good at using feathers for costumes and shells for wind musical instruments in ceremonies and warfare.

The Mayans also used natural food items very effectively.

- Through farming, they grew maize and ground it into flour to make a tortilla-type of bread
- They also gave the world chocolate, which they drank flavoured with chillis

The Mayans also used cocoa beans as a form of currency and created a good trade system. The Maya also developed a calendar and a writing system. The writing system was similar to that in Stone Age Britain.

The Mayans believed in a large number of Gods who they worshipped every day. They built pyramids with temples at the top. These were monuments to the Gods.

Although there are some similarities between the Mayans and Modern British life, (e.g Religion, Houses, Trade), Maya life was very different to our lives in Britain today. This is mainly due to the development of technology.

By Ad 900, the Mayan civilisation had collapsed. No-one knows for sure how this happened. Some Historians think they may have ran out of natural resources in the region. Others say there could have been a change in climate and some think they may have lost wars.

After this, Spanish invaders invaded Mayan Civilisations. When the European (Spanish) invaders arrived, surviving Mayans were living in farming villages– the big cities were already buried in Rainforests. Spanish invaders took over the land. Some descendants of the Maya still live in Central America. They try to follow some of the traditions however, this is hard because they live in different places.

The Mayans have helped shaped our lives today in many ways:

- They created a calendar system and developed writing as a form of communication
- They were skilled farmers and grew a range of crops for food
- They developed many ways to create buildings– they did this without tools
- They created trade routes and developed a currency for this (Cocoa Beans)



Vocabulary

Ancient– In the very distant past

Civilization– A large group of people who share certain ways of living

Maya– The name for a group of people who lived a long time ago in central America

Mayan– A civilisation in the ancient past

Religion– A belief in something

Belief– A strong opinion

Ritual– A ceremony with set actions

Society– People living together who have shared customs

Culture– The way of life of a group of people

Reasons– Why something is the way it is
enquiry



Art Knowledge

Post-Impressionism

Post-impresionism is a style of Art which lasted from approximately 1885-1910.

In this time, Artists had learned about using light, shadows, and colours in their art from the Impressionists. They wanted to add their own new ideas to art so they began to try new subjects, techniques, perspectives, and shapes.

They wanted to express their thoughts and emotions in Art.

Henri Rousseau is a post-impresionist Artist and one of his famous paintings is 'Tiger in a Tropical Storm.' This was the first of many jungle rainforest paintings he created. It lasted approximately from 1885 to 1910.



Henri Rousseau— French Artist



Tiger in a Tropical Storm

Vocabulary

Tint— Adding white to a colour to create a lighter version of the colour

Shade— Creates a darker version of a colour

Chalk— A soft material used within Art

Pastels— A soft material with oil used within Art— used to create tints and shades

Watercolour— A painting medium which is water-based

Sketch Books

Sketch books are used by artists for drawing or painting as a part of their creative process, experimenting with art and design techniques

SHADES

base color
+
black



TINTS

base color
+
white



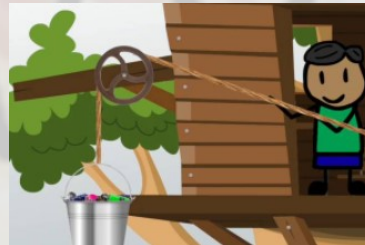
Design and Technology Knowledge

Pulleys— How are they made? What are they used for?

Pulleys are made by looping a rope over one or more wheels. They are often used to lift heavy objects: pulling down on one end of the rope creates an upward pull at the other end. Looping the rope over more wheels increases the upward force. Pulleys are effective in lifting and moving heavy items because they reduce the amount of force needed to raise an object.

Pulleys are used in lots of different places— they can even be used in the rainforest— to lift or transport heavy loads— up, down or sideways.

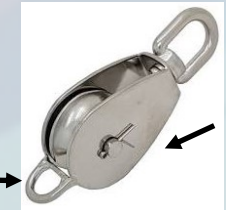
Archimedes of Syracuse is thought to have developed the first compound pulley.



Vocabulary

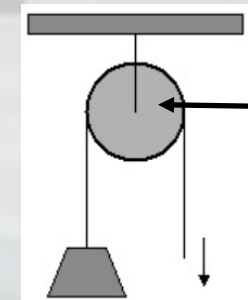
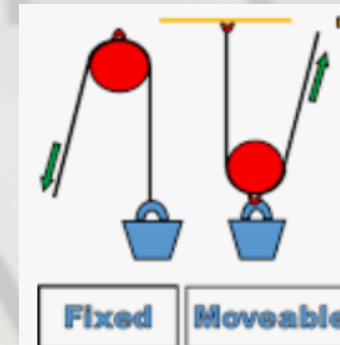
6. What is a Pulley?

- A pulley is a simple machine with a wheel and with a rope.
- The rope fits around the edge of the wheel.
- You can use a pulley to move a load up, down or sideways.



Pulley

A Simple Pulley System



Gear

Design and Make

When designing a pulley system for a particular purpose, it is important to test out different materials. Pulleys can be created using lots of different materials and objects. When creating a pulley system, it is important to select appropriate tools and equipment (e.g. gears, string, rope)

Evaluate

After designing and making a pulley system, it is important to evaluate it's effectiveness at lifting or moving objects— What is effective? How could it be more effective?