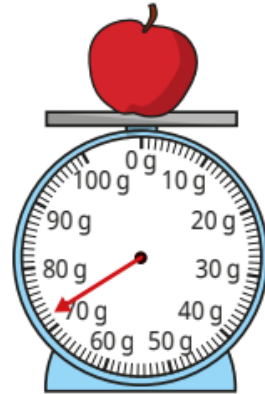
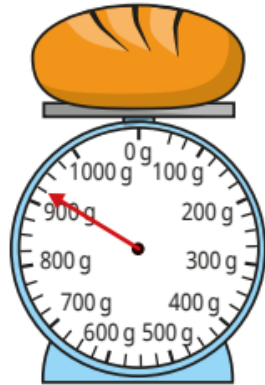
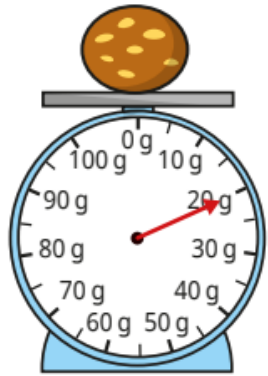


Last term (Y3)

What is the mass of each object?



Previous learning...

Round each number to the nearest 1,000

2,290

720

3,450

9,932

5,049

53

6,500

9,502

We are currently learning...

Match the inverse operations.

$7 \times 6 = 42$

$18 \div 6 = 3$

$3 \times 6 = 18$

$72 \div 6 = 12$

$9 \times 6 = 54$

$54 \div 6 = 9$

$12 \times 6 = 72$

$42 \div 6 = 7$

We are learning next...

Complete the number line to show counting in multiples of 9

